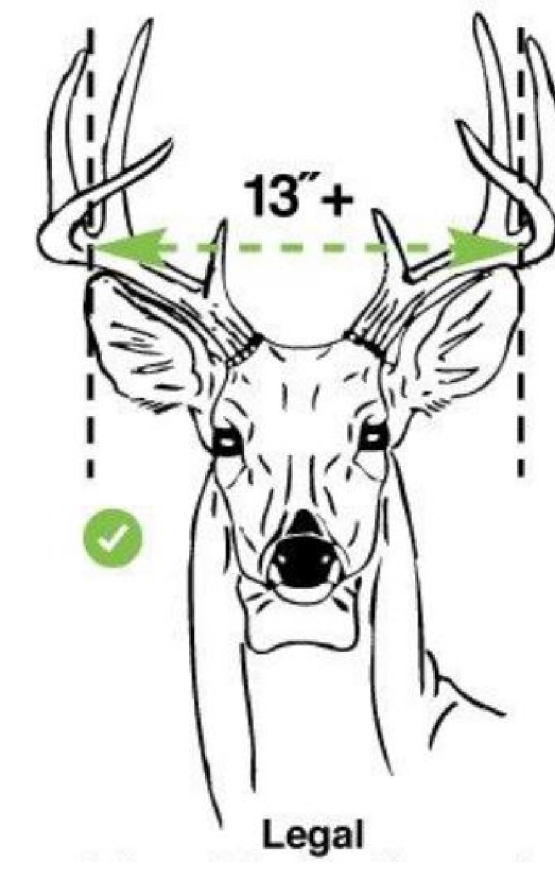


Deer Hunting Map

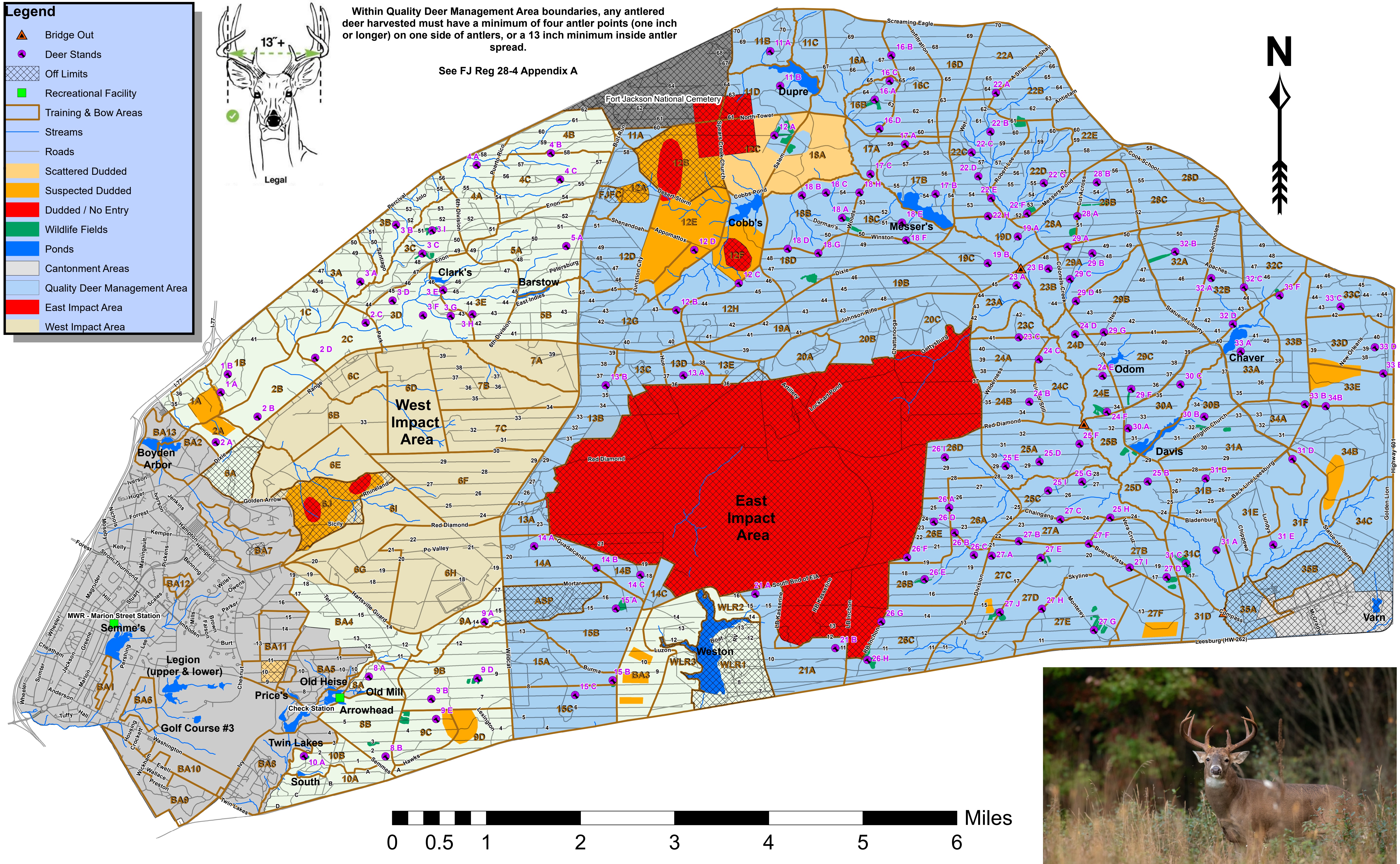
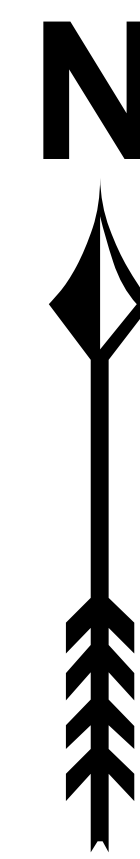
Legend

-  Bridge Out
-  Deer Stands
-  Off Limits
-  Recreational Facility
-  Training & Bow Areas
-  Streams
-  Roads
-  Scattered Dudded
-  Suspected Dudded
-  Dudded / No Entry
-  Wildlife Fields
-  Ponds
-  Cantonment Areas
-  Quality Deer Management Area
-  East Impact Area
-  West Impact Area



Within Quality Deer Management Area boundaries, any antlered deer harvested must have a minimum of four antler points (one inch or longer) on one side of antlers, or a 13 inch minimum inside antler spread.

See FJ Reg 28-4 Appendix A



8 July 2024

Prepared By:
Ian Smith
Forestry Branch